

# Welcome!

## Going Virtual: Using iClicker to Keep Students Engaged

For the best experience, watch this webinar on your computer while using iClicker Reef on your smart device.

During the webinar you will have the opportunity to participate using the iClicker Reef student app.

1. **Download** the iClicker Reef iOS or Android app from the **iTunes** or **Google Play** stores, or visit **iClicker.com** to vote using your computer's web browser.
2. Sign in with your existing instructor account credentials or create a new account.
3. Join this webinar's course to participate in polls:

Institution: **Macmillan Learning**

Course: **Going Virtual with iClicker**

Instructor: **Natalie Dougall**

# iClicker's COVID-19 Support

- iClicker works with your existing lesson plans, presentation tools and all video conferencing programs
- **Free iClicker Reef use** for all students in current courses through the end of this academic term
- Additional training webinars for new users next week
  - March 24, 4 PM ET & March 25, 11 AM ET
- Visit [learn.iclicker.com/covid19-response](https://learn.iclicker.com/covid19-response) for more information & to sign up for these training webinars

# Macmillan Learning's COVID-19 Support

Macmillan Learning offers high-quality content & tools intended for asynchronous work.



**LaunchPad**  
macmillan learning



**Sapling Plus**



**FliptPhysics**

Visit [macmillanlearning.com](https://www.macmillanlearning.com) for more information.

# Today's Agenda

---

- iClicker: Before, During & After Class
- Instructor and Student Set Up
- Best Practices for Your Virtual Classroom
  - ◆ Starting Your Virtual Classroom
  - ◆ Quick Video & Slide Design Tips
  - ◆ Using iClicker Virtually: Put Away Your Remotes & Bases!
- Frequently Asked Questions from iClicker Professors
- Q&A



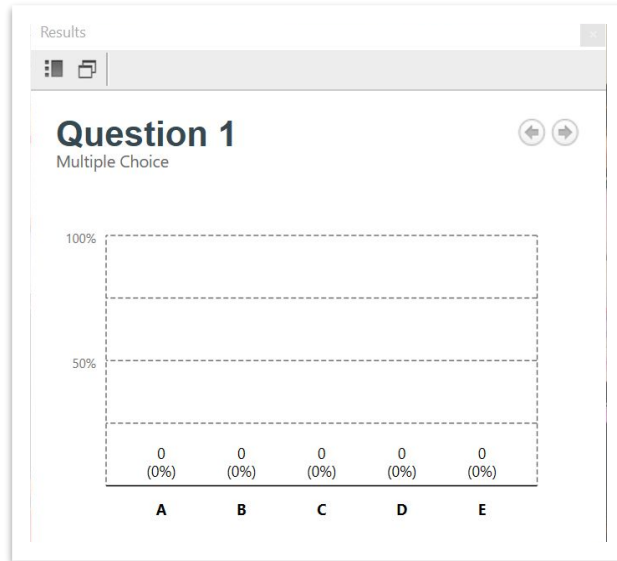
**JOIN OUR  
POLLING  
SESSION NOW!**

Institution:  
**Macmillan  
Learning**

Course Name:  
**Going Virtual  
with iClicker**

Instructor:  
**Natalie  
Dougall**

# Balance the Bars



1. I'm going to start a multiple choice poll and open the results window while the poll is running
2. Work as a group to have even responses in each column.
3. Once the bars are balanced, I'll stop the poll.

# Welcome, New iClicker Users!



Ask questions while you teach with students responding from home in real time



Works with any presentation software and any video conferencing program



iClicker works with your lesson plan– no preloading questions or answers



Take attendance and create student study guides automatically



Give every student a voice and a way to participate



Easily export grades to upload to your LMS



**JOIN OUR  
POLLING  
SESSION NOW!**

Institution:  
**Macmillan  
Learning**

Course Name:  
**Going Virtual  
with iClicker**

Instructor:  
**Natalie  
Dougall**



## How familiar are you with in-class polling?

**A.** I'm completely new to it!

**B.** I'm familiar with it but have not used it.

**C.** I've used it but not lately.

**D.** I use in-class polling sometimes.

**E.** I use it all the time!

# Welcome, Experienced iClicker Users!

## Continue to use the software you are already using.

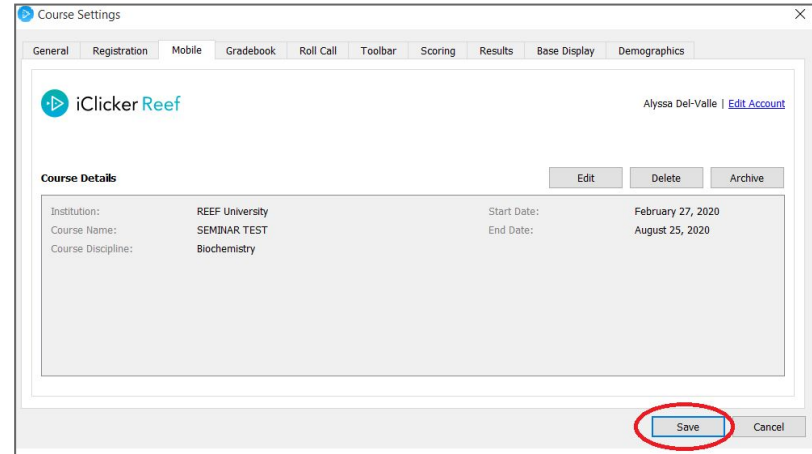
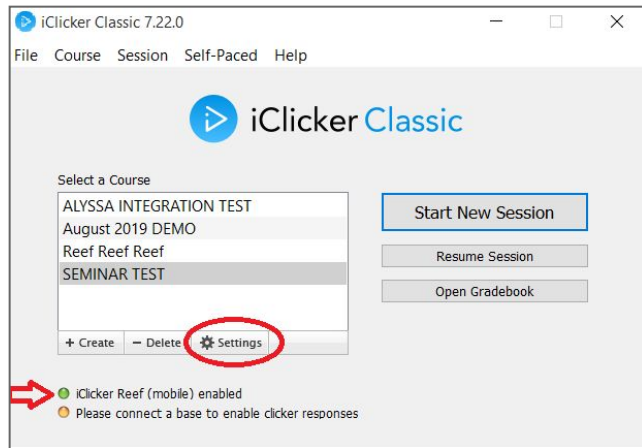
- Both the iClicker Classic and iClicker Cloud instructor software will work in your virtual classes
- Whichever instructor software you use, it's time to put your iClicker remotes & bases in short-term storage
- Existing LMS connections will continue to transfer your grades
  - Temporary hold on new LMS Integrations
- Keep your students' grades and experience consistent



# Welcome, iClicker Classic Users!

Here's what you need to do to get students ready to participate with iClicker online **without iClicker Remotes**.

## Step 1: Open the Course Settings

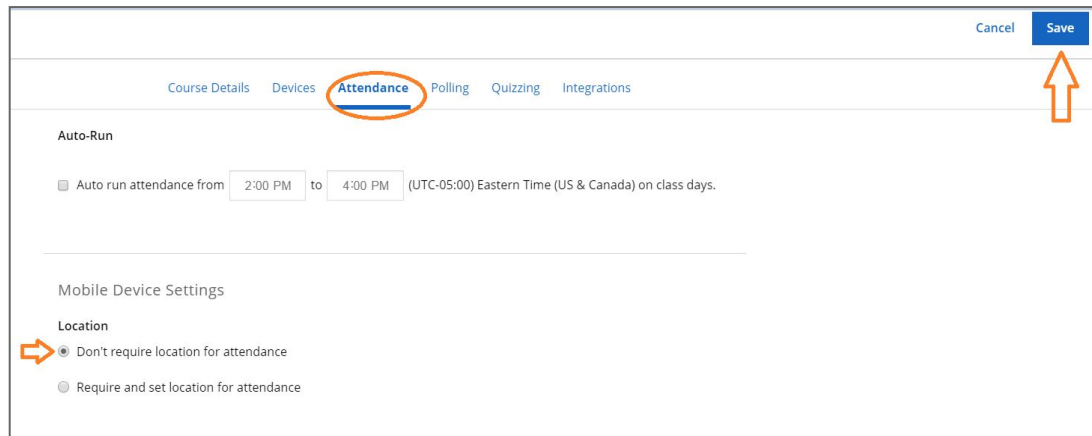
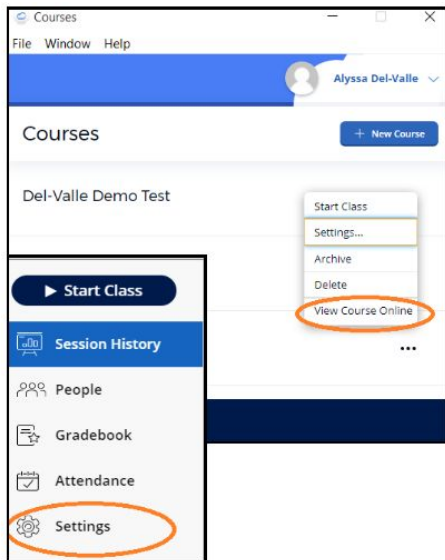


## Step 2: Enable in the Mobile Settings tab

# Welcome, iClicker Cloud Users!

Here's what you need to do to get students ready to participate with iClicker online **without iClicker Remotes**.

## Step 1: Open the Course Settings



## Step 2: Disable location in the Attendance tab

# Next Steps for Students

---

- Students may assume iClicker doesn't work virtually. Let them know iClicker will still be a part of their education.
- iClicker is an engagement tool designed for **live class events**.
- Let students who were using remotes know how to properly sign up for iClicker Reef.
- Visit the iClicker Support Site for resources that you can share with your students



**JOIN OUR  
POLLING  
SESSION NOW!**

Institution:  
**Macmillan  
Learning**

Course Name:  
**Going Virtual  
with iClicker**

Instructor:  
**Natalie  
Dougall**



## What would you most like to use iClicker for in your virtual classroom?

- Give my students a reason to attend virtual lectures
- Break up my virtual lecture into surmountable sections
- Create tight feedback loops in real time
- Encourage participation from every student
- Give and receive feedback in real time
- Set student expectations & focus their studying sessions
- Collect feedback on my lesson plans

# Before using iClicker Cloud in class:

1. Create an instructor account
2. Create your iClicker Cloud course
3. Message students
4. Add questions to your existing presentation



Do I need to "pre-program" iClicker with questions and answers??

# Instructor & Student Experience – During Class

## Instructor

1. Start your video conferencing software
2. Open your presentation
3. Start Class with iClicker Cloud



## Student

1. Log In to iClicker Reef
2. Join your iClicker Cloud class, automatically marking students present with iClicker Attendance
3. Participate in iClicker Polls & Quizzes



## Multiple Choice

Allows students to make a simple selection to answer a question.

- Multiple Choice A-E
- Yes/No
- True/False
- Survey
- Ice Breaker



## Short Answer

Allows students the ability for a freeform input.

- Word Cloud
- Essay
- Multiple Choice (A-Z)
- Matching
- Ranking Order



## Numeric

Students can input numeric values to answer questions.

- Numeric Questions
- Scientific Notation
- Rating



## Target

Students can tap on an image to answer different types of questions.

- Anatomy
- Graphs and Charts
- Scale
- Select on a Map



## Exit Poll

Get feedback from students at the end of class.

- Level of Understanding
- Muddiest Point



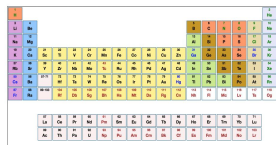
Start Class

End Class

# Instructor Experience – After Class

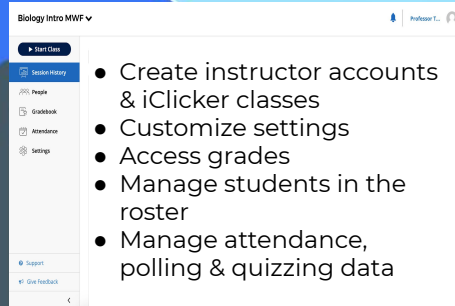
**In Class**  
iClicker Cloud  
desktop software

What is the atomic number of Bromine?



A periodic table of elements is displayed on a screen. The element Bromine (Br) is highlighted in orange. The table shows the standard layout of elements with their atomic numbers and symbols.

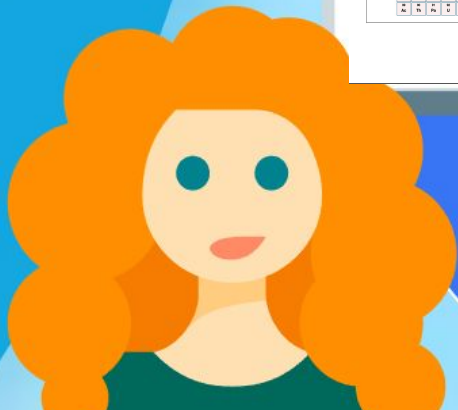
- A)83
- B)56
- C)35
- D)4



A screenshot of the iClicker Cloud instructor website interface. The page title is "Biology Intro MWF". The left sidebar contains navigation options: "Start Class", "Session History", "People", "Gradebook", "Attendance", "Settings", "Support", and "Give Feedback". The main content area lists several features:

- Create instructor accounts & iClicker classes
- Customize settings
- Access grades
- Manage students in the roster
- Manage attendance, polling & quizzing data

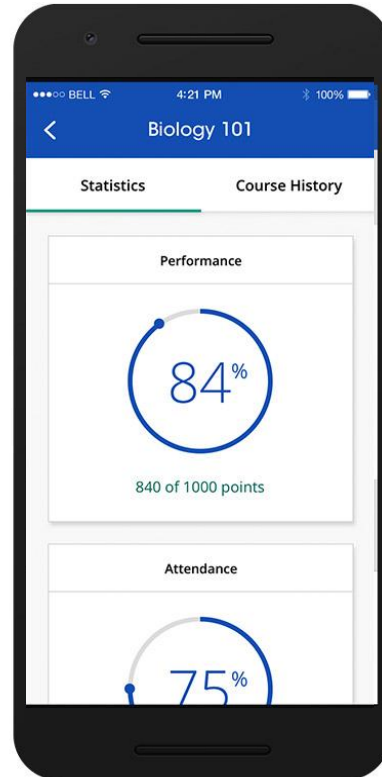
**Out of Class**  
iClicker Cloud  
instructor website





# Student Experience – After Class

- Attendance Record
- Performance Record
- Course History
- Study Tools
  - Flashcards
  - Practice Tests



The screenshot displays a 'Question 1' interface. The question asks, 'How many chiral carbons are in this molecule?'. The molecule is a complex polycyclic structure with a hydroxyl group and several methyl groups. The options are A. 5, B. 6, C. 7, D. 8, and E. 9. At the bottom, the text 'ANSWER RECEIVED' is shown above five circular buttons labeled A, B, C, D, and E. Button C is highlighted in blue, indicating it is the selected answer.

# Best Practices: Your Virtual Classroom

- Open your video conferencing, presentation and iClicker
- Turn on your video camera to help class feel “real”
  - Create an interesting background & light
  - Bookend learning sessions with a friendly face
- Hide anything you want to keep private on your computer!
- Make sure you share your entire desktop and not just one app or window
- Print lecture notes or have them open on a second screen/device

# Optimizing Your Presentations for Your Students

## Review Your Existing Lecture Slides

- Add polling questions to your lesson deck
- What do your slides look like on students' phones?
- Colors, contrast and font size-- [Keep accessibility the priority](#)

## iClicker Reef Accessibility

- We recommend students with accessibility needs use the iClicker Reef web app
- Say the questions and answers aloud
- Leave questions open for extra time (if needed)

# Anticipate Polling Surprises

Have a "what if it goes sideways?" plan in mind as you write polling questions.

- Ask questions on the fly
- Ask questions more than once
- Open results and debate as a class before grading



## Knowledge Base

Narrow your filter

Role

Products

Topic

**Did you mean:** remote instructors

First Previous **1** 2 3 4 5 6 7 Next Last

Showing page 1 of 26 of 130 results (0.171 seconds).



Sort by Relevance



### Quickstart Guide: Using iClicker for **Remote Instruction**

<https://macmillan.force.com/iclicker/s/article/How-to-Use-iClicker-for-Remote-Instruction>

if they need help with access codes and registration. Step 7: Use iClicker to Keep Students Engaged in Your Virtual Classroom You're no... [Show more](#)

### How to Run Polls in Class with iClicker Cloud

<https://macmillan.force.com/iclicker/s/article/How-to-Run-a-Polling-Session-in-iClicker-Cloud>

**Instruct.** Students to Join Session When you start class, your session becomes active and ready to join. **Instruct** students to join the session. [Show more](#)

# iClicker in Your Virtual Classroom: FAQs

“Do my students need to find their remotes? Should I plug in my base?”

- Put your remotes and bases away, iClicker does not require any hardware when used virtually.

“I use iClicker Classic. Will my roster double up as students switch from remotes to iClicker Reef?”

- Initially you will see “unknown Reef user” in your gradebook but syncing will link those Reef users to the proper student accounts.

“I’ve been using iClicker Classic, should I switch to Cloud now?”

- Keep using the software you were using before. This will minimize disruptions to your gradebook and to the student experience

“Sometimes my students can’t seem to connect to campus wifi. Is this problem going to get worse now that all my students are home?”

- Students generally have an easier time connecting to their home internet than campus connection.

**Questions? Comments?**

**Thank You!**